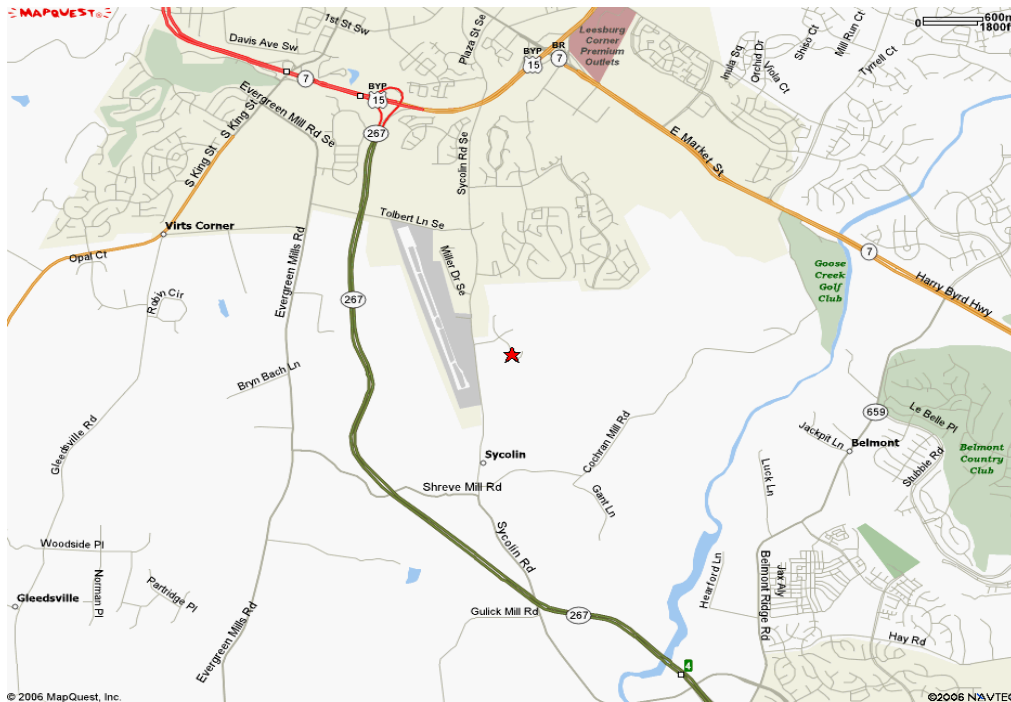


# Virginia Department of Fire Programs Division 7 Office – Leesburg, Virginia



## Driving Directions

From the Washington Beltway take the toll road (267) towards Leesburg. Take the right ramp onto the RT15/7 bypass towards Leesburg Airport / Alexandria & Fredrick MD. As soon as you exit the ramp prepare to turn right onto Sycolin RD. Continue .2 miles to left on Loudoun Center Place. Turn right .1 miles (first stop sign) on to Courage CT. The office is the gray building on the right.

From Tyson's Corner (RT 7) continue on RT 7 west to south on the Leesburg RT 7/15 bypass (this is a right exit and overpass). As soon as you exit the ramp move to the left hand lane and prepare to turn left onto Sycolin RD. Continue .2 miles to left on Loudoun Center Place. Turn right .1 miles (first stop sign) on to Courage CT. The office is the gray building on the right.

From RT15 south (Warrenton area) continue north on RT 15 towards Leesburg. Take a right on the ramp to the RT15/7 bypass towards Leesburg Airport / Alexandria & Fredrick MD. Go 1.7 miles (First stop light) to a right onto Sycolin RD. Continue .2 miles to left on Loudoun Center Place. Turn right .1 miles (first stop sign) on to Courage CT. The office is the gray building on the right.

From the Winchester area continue on RT 7 east, staying on the RT 7/15 Leesburg bypass to a right onto Sycolin RD. Continue .2 miles to left on Loudoun Center Place. Turn right .1 miles (first stop sign) on to Courage CT. The office is the gray building on the right.

From the Fredrick MD area, take RT 15 south to the RT15/7 Leesburg bypass to a left onto Sycolin RD. Continue .2 miles to left on Loudoun Center Place. Turn right .1 miles (first stop sign) on to Courage CT. The office is the gray building on the right.